

DEMOUNTABLE PARTITIONS

WOOD CEILINGS & COVERINGS

RAISED ACCESS FLOORS

METAL CEILINGS & COVERINGS

# NEXT | GENERATION INTERIORS

## DEMOUNTABLE PARTITIONS

### THE PERSON, AT THE CENTRE

**The future is now: CBI Europe integrated solutions for high-quality work environments, where customized well-being generates high performance.**

The office is an organised work environment where information is received and processed, and purely conceptual activities are carried out; an area, therefore, reserved for cognitive/decision-making activities rather than for developing manual skills. Recent studies have shown that operator performance is strictly related to the environment where the work is conducted, and have highlighted several risk factors: micro-climate, air quality, exposure to noise, unsuitable illumination and viewing conditions, prolonged seated posture, injury, risk of allergies - from bacteria, carbonless copy paper, biological agents, etc.-, psycho-physical stress, exposure to biological agents or electromagnetic fields, passive smoking or chemical substances of various origin. The resulting effects - sick building syndrome, mental and visual strain, etc.- cause discomfort and, consequently, poor performance.

The solution lies in designing work environments with minimal exposure to risk factors or re-adapting existing environments, by optimising the micro-climate, acoustics, environmental illumination and ergonomics of the workplace. Although the current regulations provide detailed indications concerning environmental control of buildings, these are rather general (the traditional 'one-size fits all' approach).

With over 25 years experience in 70 countries worldwide, CBI EUROPE - in line with recent studies conducted by the Building Owners and Managers Association (BOMA) and in collaboration with the Urban Land Institute (ULI) - adopts a more evolved approach in designing its products, whereby personal spaces are controlled autonomously - which translates into effective, eco-sustainable and socially responsible solutions. This approach is based on advanced technologies, materials research, international comparisons, Italian style and creativity.

Personally controlling our surroundings generates comfort, well-being and high performance.





Aston Building head quarters \_ Košice \_ Slovakia

Hi-tech modular partition systems.  
Sistema hi-tech di partizioni modulari.

## / GENESY

elegance and modularity.



STG Creation / Precigems \_ Switzerland

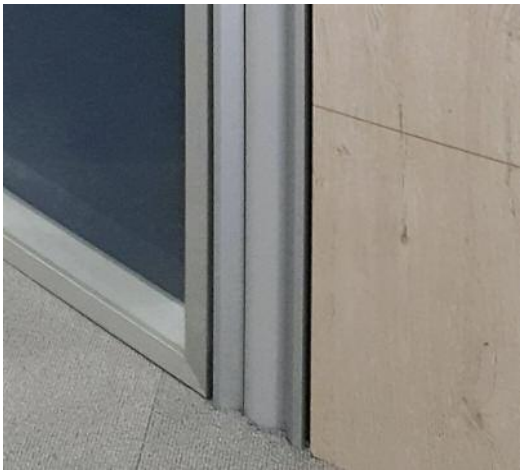
ideal for:  
WORKING ENVIRONMENTS WITH  
SOPHISTICATED PRIVACY, ACOUSTIC  
AND AESTHETIC ISOLATION,  
AND INTERIOR QUALITY.

**EN** In harmony with the different design ideas and the aesthetics, the technical and **functional requirements**, and its **modularity**, the **GENESY system** allows the organization of a space in a contemporary, elegant and confidential way. Glazed, blind, perforated and equipped, available in a wide range of wood or color finishes, GENESY modules are easy to install and designed to ensure maximum stability, durability, safety, acoustics and hygiene.

### stile e modularità.

**IT** In accordo con le diverse idee progettuali e le esigenze estetiche, tecniche e funzionali, il **sistema GENESY, componibile e modulare**, permette di organizzare uno spazio in modo contemporaneo, elegante e riservato. Vetrati, ciechi, forati e attrezzati, disponibili in un'ampia gamma di finiture in legno o colori, i moduli GENESY sono facili da installare e studiati per garantire il massimo delle prestazioni di stabilità, durata, sicurezza, acustica ed igiene.

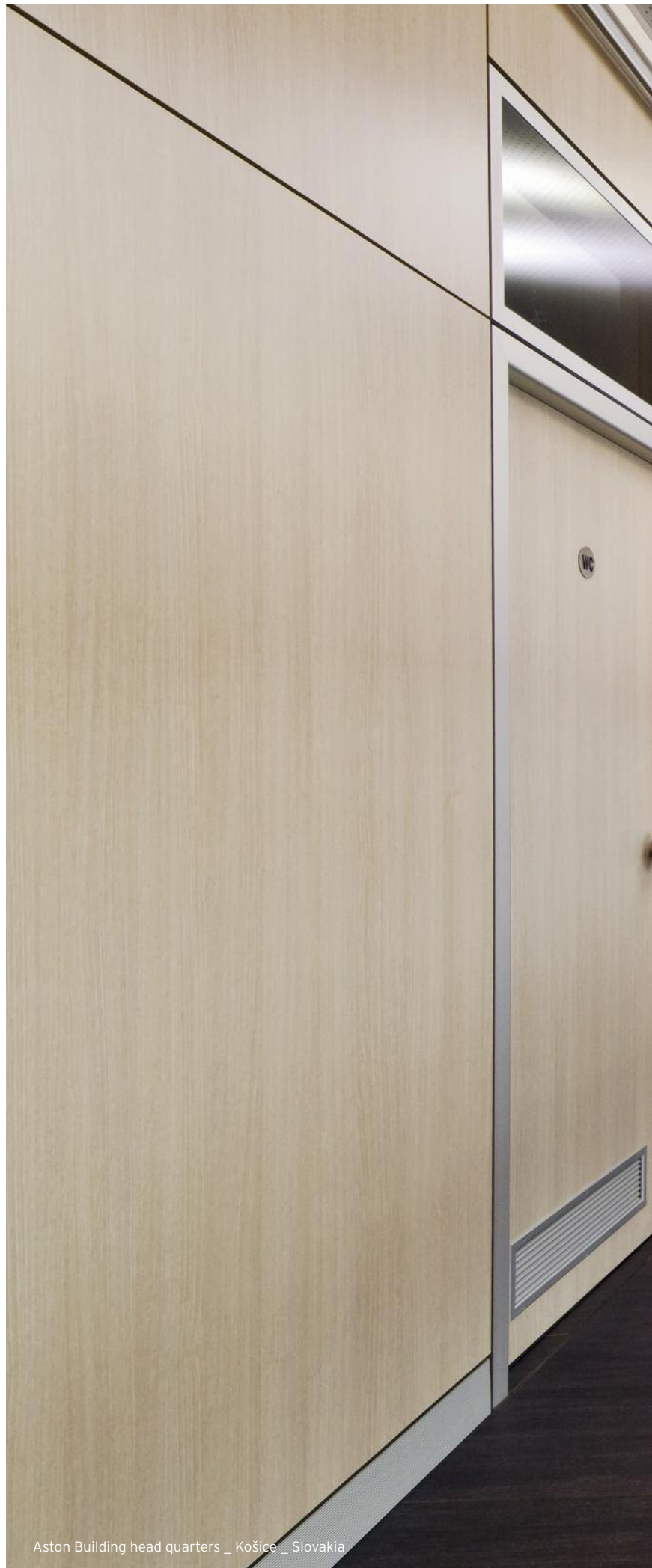




**2 way joint**  
Raccordo a 2 vie



**90° degree corner**  
Angolo 90°











#### GENESY SYSTEM

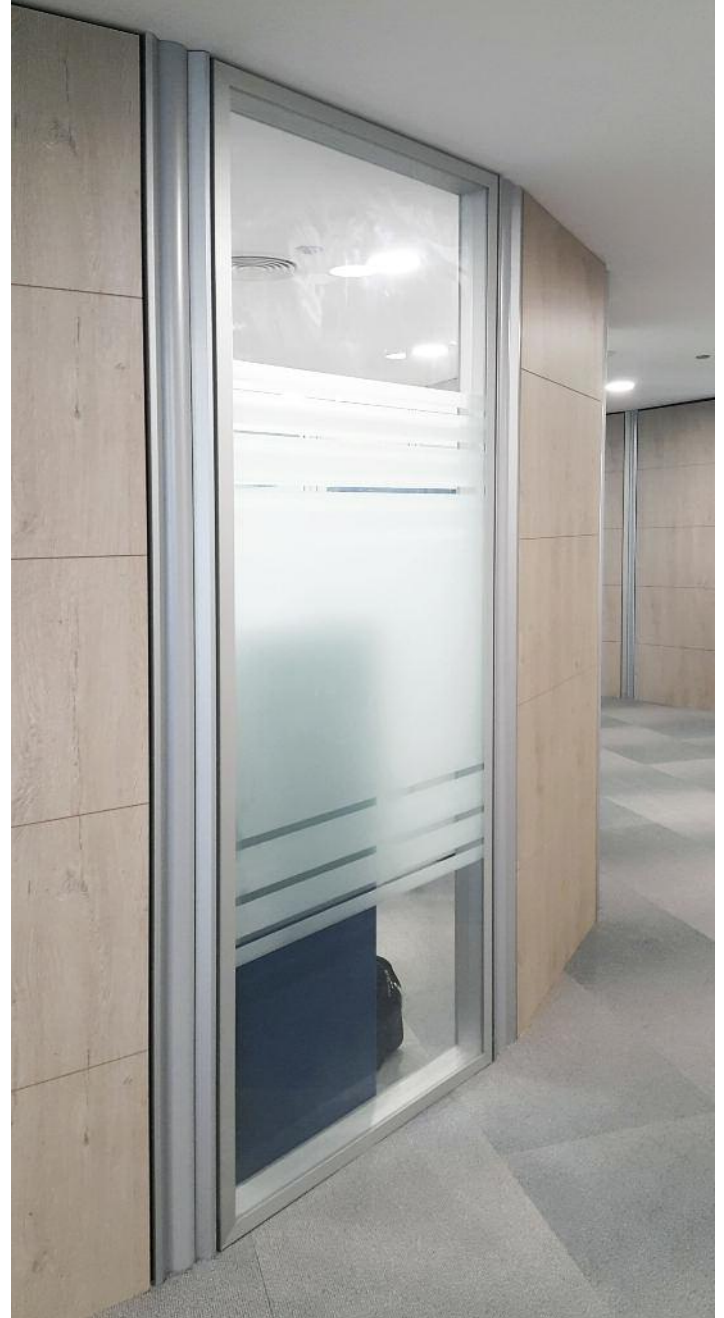
Ampia gamma di moduli tecnici, riconfigurabili e personalizzabili. Stabilità statica senza necessità di controspinta a soffitto. Facilità di installazione. Riconfigurabile senza limiti.

A wide range of technical modules, re-configurable and customizable. Static stability without the need for ceiling counterforce. Easy installation. Unlimited configurability.





World Trade Center · The Sphere \_ Doha \_ Qatar



**Liberty of design and composition, thanks to the variety of joining elements, makes it possible to be created with the possibility of creating non-orthogonal walls. Environments can be configured - and reconfigured - with no space constraints.**

La libertà progettuale e di composizione, grazie alla varietà degli elementi di raccordo, si realizza anche con la possibilità di creare pareti non ortogonali. Gli ambienti possono essere configurati - e riconfigurati - senza vincoli di spazio.





CBI EUROPE head quarters \_ Osimo \_ Italia

## CERTIFICATIONS - CERTIFICAZIONI

<b>load bearing</b> _resistenza al carico orizzontale	<b>According to UNI 10879</b>
<b>resistance of frames</b> _resistenza guide e telai	<b>According to UNI 8605/84</b>
<b>acoustical insulation value according to UNI 11004 with rockwool density 100 kg/m3 (solid partitions) (certification available under request at project dept. of CBI Europe SpA)</b> fonoisolanza con lana di roccia densità 100 kg/m3 UNI 11004 (pareti cieche) (certificato su richiesta > ufficio progettazione CBI Europe SpA)	<b>46 db</b>
<b>acoustical insulation value according to UNI 11004 with rockwool density 60 kg/m3 (solid partitions) (certification available under request at project dept. of CBI Europe SpA)</b> fonoisolanza con lana di roccia densità 60 kg/m3 UNI 11004 (pareti cieche) (certificato su richiesta > ufficio progettazione CBI Europe SpA)	<b>37 db</b>
<b>acoustical insulation value according to UNI 11004 without rockwool (certification available under request at project dept. of CBI Europe SpA)</b> fonoisolanza senza lana di roccia UNI 11004 (pareti cieche) (certificato su richiesta > ufficio progettazione CBI Europe SpA)	<b>29 db</b>
<b>acoustical insulation value according to UNI 11004 with double layer laminated acoustical glass Visarm 6/7 mm (glass partitions) (certification available under request at project dept. of CBI Europe SpA)</b> fonoisolanza con doppio vetro stratificato acustico Visarm 6/7 mm UNI 11004 (pareti vetrate) - (certificato su richiesta > ufficio progettazione CBI Europe SpA)	<b>40 db</b>

## TECHNICAL CHARACTERISTICS AND QUALITY REQUIREMENTS OF ALUMINIUM COMPOSING ELEMENTS.

Door and window frames are manufactured in extruded aluminum and finished through anodizing process or polyester powder coating.  
CARATTERISTICHE TECNICHE E REQUISITI DI QUALITÀ DELL'ALLUMINIO.

Telai porta e telai vetriati sono realizzati in alluminio estruso con finitura anodizzata Silver o verniciati a polvere di poliestere.

<b>alloy</b> _ lega 6060/t 5	<b>test UNI 573-3 / UNI 755-2</b>
<b>traction breakage load</b> _ carico di rottura a trazione	<b>160 Pascal</b>
<b>yield load limit</b> _ carico al limite di snervamento	<b>120 Pascal</b>
<b>heat conductivity a 20°C t6</b> _ conducibilità termica a 20°C t6	<b>175 W/(cm x k)</b>
<b>specific weight</b> _ peso specifico	<b>27 Kg/dm2</b>

## TECHNICAL CHARACTERISTICS AND QUALITY REQUIREMENTS OF PANELS.

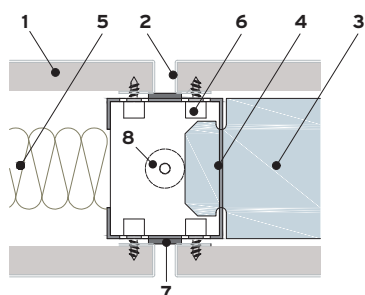
Woodcore chipboard panel covered with melamine finish. Panels lined on all four sides with rigid 10/10 ABS.

CARATTERISTICHE TECNICHE E REQUISITI DI QUALITÀ DEI PANNELLI. .

Telai porta e telai vetriati sono realizzati in alluminio estruso con finitura anodizzata Silver o verniciati a polvere di poliestere.

<b>specific weight</b> _ peso specifico	<b>680 Kg/m3</b>
<b>unitary weight</b> _ peso unitario	<b>10.88 Kg/m2</b>
<b>resistance to bending</b> _ resistenza alla flessione	<b>16 Newton/mm2</b>
<b>resistance to traction</b> _ resistenza alla trazione	<b>0.35 Newton/mm2</b>
<b>resistance to abrasion</b> _ resistenza all'abrasione	<b>level 5 - Test UNI 9115</b>
<b>stain resistance test</b> _ resistenza alle macchie	<b>level 5 - Test UNI 9114</b>
<b>resistance to damp heat</b> _ resistenza al calore umido	<b>level 5 - Test UNI 9117</b>
<b>resistance to dry heat</b> _ resistenza al calore secco	<b>level 3 - Test UNI 9116</b>
<b>variation to light</b> _ variazione alla luce	<b>level 5 - UNIPLAST 356/XI</b>
<b>resistance to adhesion</b> _ prova di adesione	<b>2,7 Newton</b>
<b>surface hardness</b> _ durezza superficiale	<b>Level 9H</b>
<b>resistance to scratching</b> _ resistenza al graffio	<b>1.7 Newton</b>
<b>resistance to dirt</b> _ resistenza allo sporco	<b>Level 5</b>
<b>formaldehyde emission</b> _ emissione di formaldeide	<b>Class E-1</b>

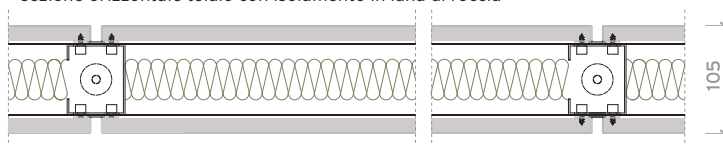




- 1 Chipboard panel covered with melamine thick. 16 mm**  
Pannello con rivestimento melaminico 16 mm
- 2 ABS edge thick. 1 mm \_ Bordo in ABS 1 mm**
- Galvanized steel crossbeam 1000 mm**
- 3 Traversa in acciaio galvanizzato 1000 mm**
- Primary galvanized steel profile 68x56 mm**
- 4 Profilo primario in acciaio galvanizzato 68x56 mm**
- 5 Possible rockwool for acoustic insulation**  
Eventuale pannello di lana di roccia
- 6 Easy Hook On clip**
- 7 Adhesive trimming 23 x 3 mm \_ Guarnizione adesiva**
- 8 Pedestal for height adjustment**  
Piedino per regolazione altezza

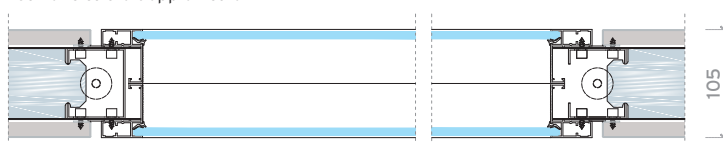
› **rockwool insulation**

sezione orizzontale telaio con isolamento in lana di roccia



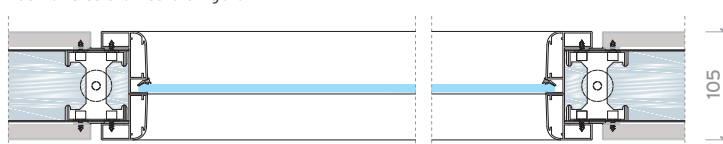
› **double glass aluminium frame**

sezione telaio doppio vetro



› **single glass aluminium frame**

sezione telaio vetro singolo



**EN · Genesy demountable partition system** consists of a structural frame, composed by vertical posts 70 x 56 mm, made in galvanized steel of 1,0 mm thickness, mechanically connected, and provided with adjustable supports to allow for easy leveling on uneven surfaces. The posts are provided with perforations at regular intervals for the passage of all electrical cables and wires for telecommunication equipment. The standard partition modules have a thickness of 105 mm and a width of 1000 mm. **The height can be variable.**

· The covering of the structural frame is finished on both sides by a **finishing panel**. The panel has 16 mm thickness and is composed by **wood fibre core** covered by a non reflecting melamine finish in class E-1 (chipboard). The panel edges have to be finished with an ABS edge in thickness 1,0 mm. The panels are fixed to the posts by specially designed quick locking fixings.

Instead of 16 mm thick chipboard panels, it can be used 14 mm or 16 mm thick **MDF** (medium density fibreboard). The MDF panels allows to create lines and different designs on the panel surface. Each panels has be individually fixed to the non-progressive posts which means that each single panels can be easily removed and replaced without disturbing adjacent panels, anytime during or after installation.

In the internal cavity between the two panels, sound absorption pads of mineral wool with a thickness of 40 mm. The orientable corner allows to create angles between 90 - 170°.

· The glazed partition modules can be selected from 2 different solutions: Single glass frame or Double glass frame\_Visarm 6/7 mm safety glass or 5 mm float glass The window frames, holding the glass panels in position are fixed to the structural posts on both sides of the partition, using the same quick-locking devices as those used to fix the panels.

· All window and door frames are finished with polyester powder coating in Silver RAL 9006 colour or anodized Silver. On specific request the aluminum frames can be supplied in every finish of **RAL color chart**.

· The door leaf has 40 mm thickness and finished with an ABS edge trim of 2 mm thickness, in the same finish as the partition.

**IT · Il sistema di pareti divisorie Genesy** è costituito da un telaio strutturale, composto da montanti verticali 70 x 56 mm, in acciaio zincato di 1,0 mm di spessore, collegato meccanicamente, e dotato di supporti regolabili per consentire un facile livellamento su superfici irregolari. I montanti sono forniti con perforazioni ad intervalli regolari per il passaggio di cavi elettrici e cavi per apparecchiature di telecomunicazione. I moduli standard hanno uno spessore di 105 mm e una larghezza di 1000 mm. **L'altezza può essere variabile.**

· Il rivestimento del telaio strutturale è rifinito da entrambi i lati da un **pannello di truciolare nobilitato melaminico**. Il pannello ha spessore di 16 mm ed è in classe E-1 (emissione di formaldeide). I bordi dei pannelli devono essere rifiniti con un bordo in ABS spessore 1,0 mm. I pannelli sono fissati ai montanti mediante clip di fissaggio rapido.

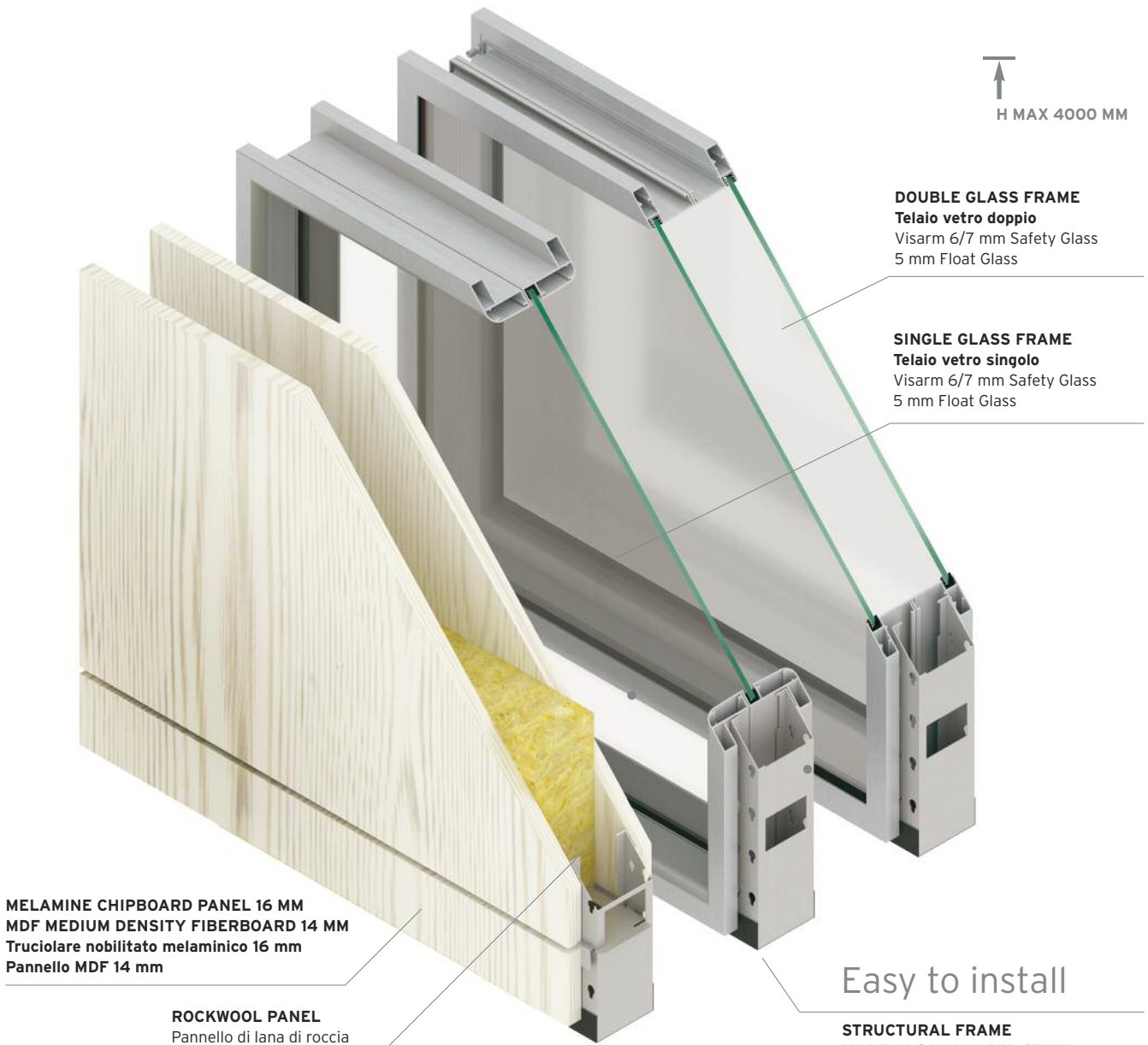
Oltre ai pannelli in truciolare nobilitato melaminico sp. 16 mm., si possono utilizzare pannelli in **MDF** (medium density fibreboard) sp. 14 mm / 16 mm. I pannelli MDF permettono di creare fresature sulla superficie del pannello. Ogni pannello è fissato individualmente al montante, questo permette ad ogni singolo pannello di essere facilmente rimosso e sostituito senza smontare pannelli adiacenti, in qualsiasi momento, durante o dopo l'installazione. Nell'intercapedine della parete, si possono inserire pannelli di lana di roccia per migliorare l'assorbimento acustico. L'angolo orientabile permette di creare angoli tra 90 - 170°.

· I moduli vetrati si possono avere in 2 diverse soluzioni: Telaio vetrato singolo o telaio vetrato doppio \_ Vetro Visarm di sicurezza 6/7 mm o 5 mm vetro float. I telai sono fissati ai montanti strutturali su entrambi i lati, utilizzando gli stessi dispositivi di bloccaggio rapidi come quelli utilizzati per fissare i pannelli.

· Il telaio vetro e i telai porta sono forniti in finitura Silver RAL 9006 o alluminio anodizzato naturale Silver. Su specifica richiesta possono essere forniti in ogni finitura della **tabella colori RAL**.

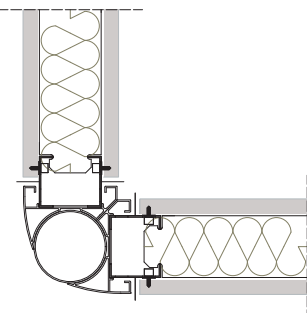
· L'anta delle porta cieca ha spessore di 40 mm e i bordi sono rifiniti con bordo ABS di spessore 2 mm, nella stessa finitura dell'anta.

↑  
H MAX 4000 MM

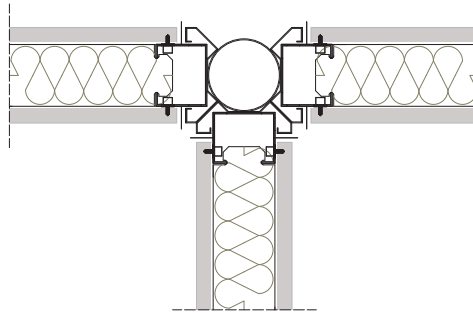


**STRUCTURAL FRAME**  
MADE IN GALVANIZED STEEL  
thickness 1 mm.  
Telaio strutturale in acciaio zincato  
spessore 1 mm.

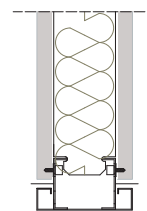
**90° Corner**  
Angolo 90°



**3 way joint**  
Raccordo a tre vie

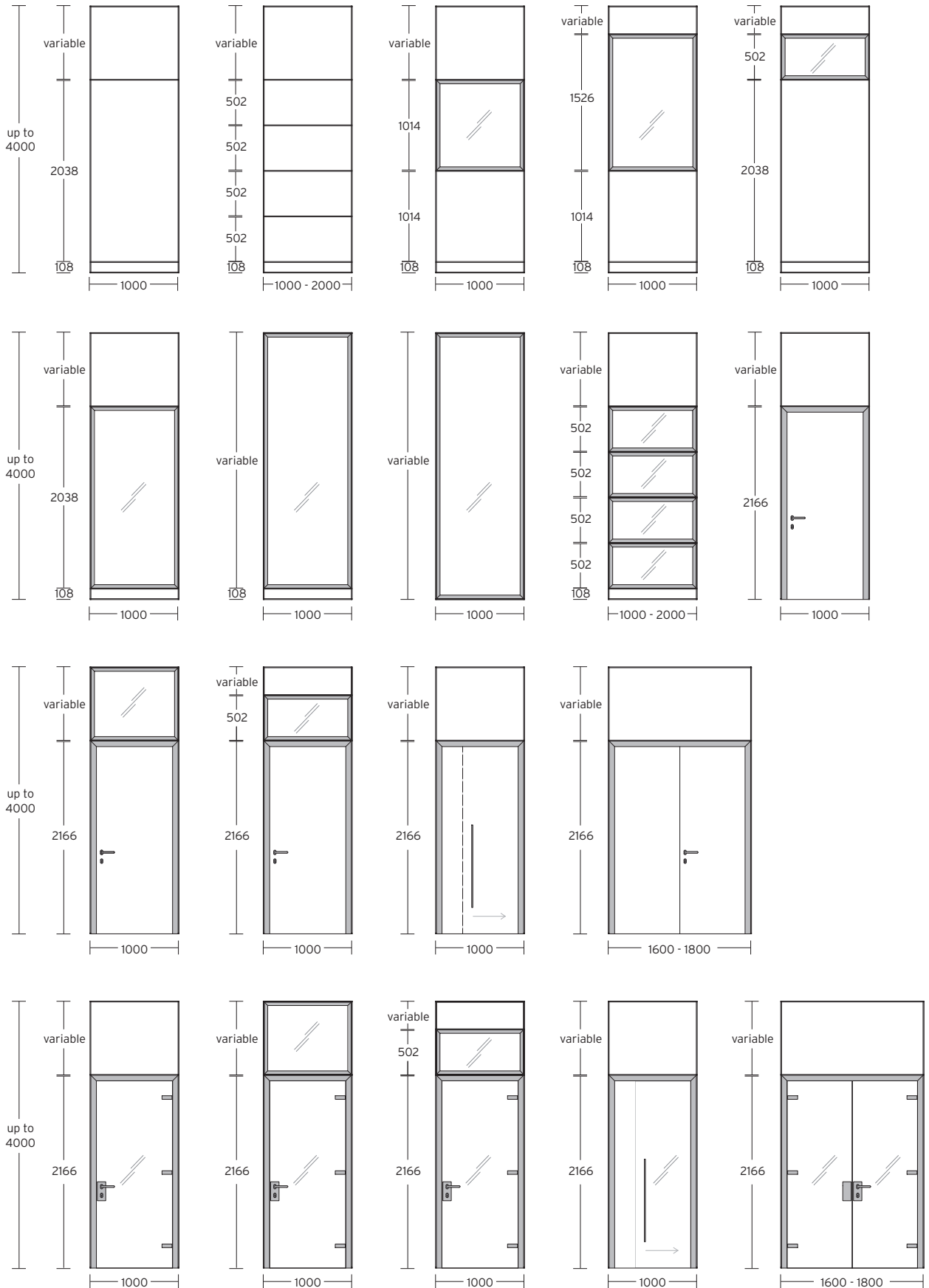


**Starting Element - End wall**  
Elemento di inizio - fine parete



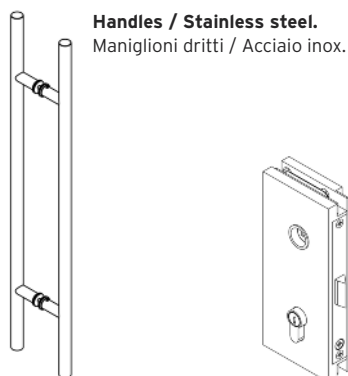


MODULE ABACO \_ ABACO MODULI



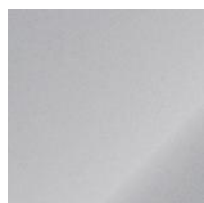
---

## HANDLES \_ MANIGLIE

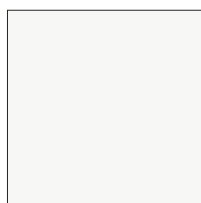


---

## AVAILABLE COLOR FOR STRUCTURE \_ COLORI DISPONIBILI STRUTTURE



aluminum anodized  
alluminio anodizzato



pure white\_bianco puro  
RAL 9010



traffic black\_nero traffico  
RAL 9017



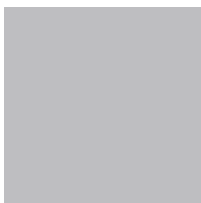
RAL colours  
on request\_a richiesta

---

## AVAILABLE COLOR FOR PANELS \_ COLORI DISPONIBILI PANNELLI



white  
bianco



metal grey  
grigio metal



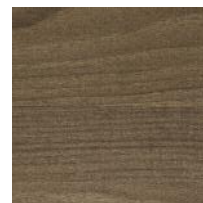
tafira elm  
olmo tafira



white oak rock  
rovere bianco rock



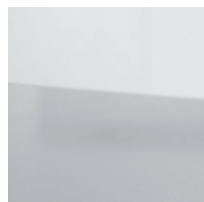
athens walnut  
noce athens



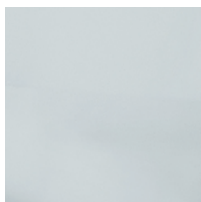
pireus walnut  
noce pireus

---

## AVAILABLE FINISHINGS FOR GLASS \_ FINITURE DISPONIBILI VETRO



trasparent  
trasparente



sandblasted  
satinato



colored  
colorato



window decals  
vetrofania



- METAL CEILINGS AND COVERINGS
- WOOD CEILINGS AND COVERINGS
- RAISED ACCESS FLOORS
- DEMOUNTABLE PARTITIONS
- OFFICE FURNITURE
- INTEGRATED AIR CONDITIONING SYSTEM
- SUSPENSION SYSTEMS FOR CEILINGS AND DRYWALL PARTITIONS
- LED LIGHTING SYSTEMS
- FIXING SYSTEM INTEGRALE ITALIA
- SUSPENSION SYSTEM

> OVER 30 YEARS EXPERIENCE IN 70 COUNTRIES AROUND THE WORLD <

**CBI EUROPE**

Via Mons. A.O. Romero, 14  
60027 Osimo (AN) ITALY  
T + 39 071 71 08 688

amministrazione\_administration:  
fax + 39 071 71 08 635  
ordini\_order:  
fax + 39 071 71 08 561

info@cbi-europe.com  
www.cbi-europe.com

