



Raised access floors

FACTORY FINISHED PANELS

**CALCIUM
SULPHATE
PANELS**

SOFT COVERINGS



CBI
EUROPE
HI-TECH INTERIORS

PANELS

CALCIUM SULPHATE PANELS

GALVANIZED STEEL DISH / SOFT COVERINGS

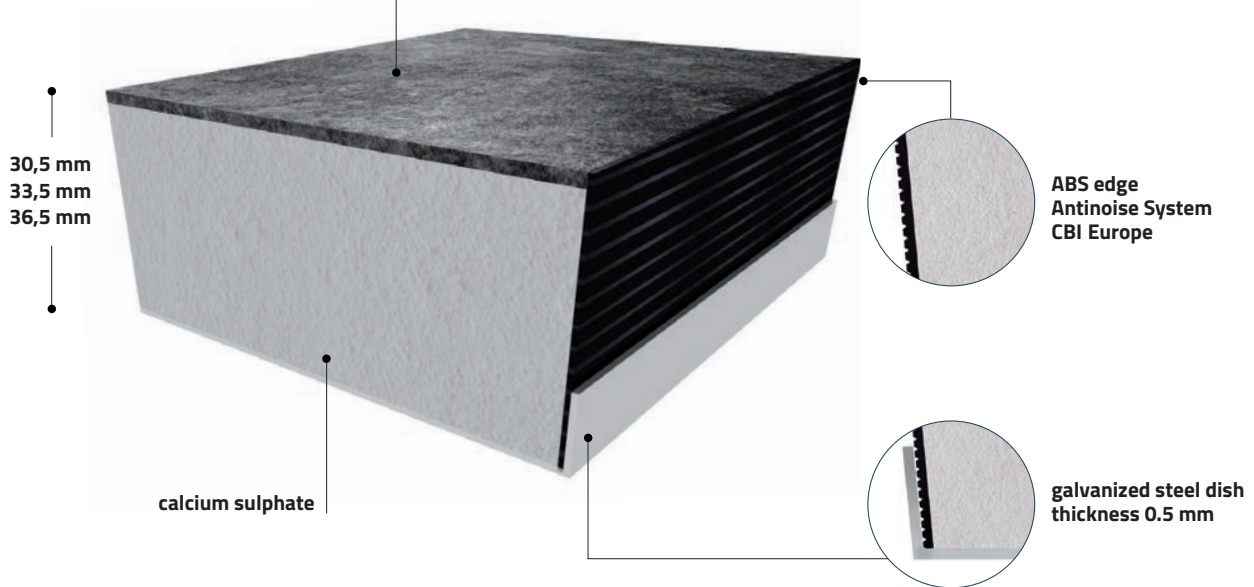
calcium sulphate 600 x 600 mm




galvanized steel 0.5 mm



REI 60

SOFT COVERINGS
ALUFOIL
HPL
PVC
LINOLEUM
RUBBER
PARQUET



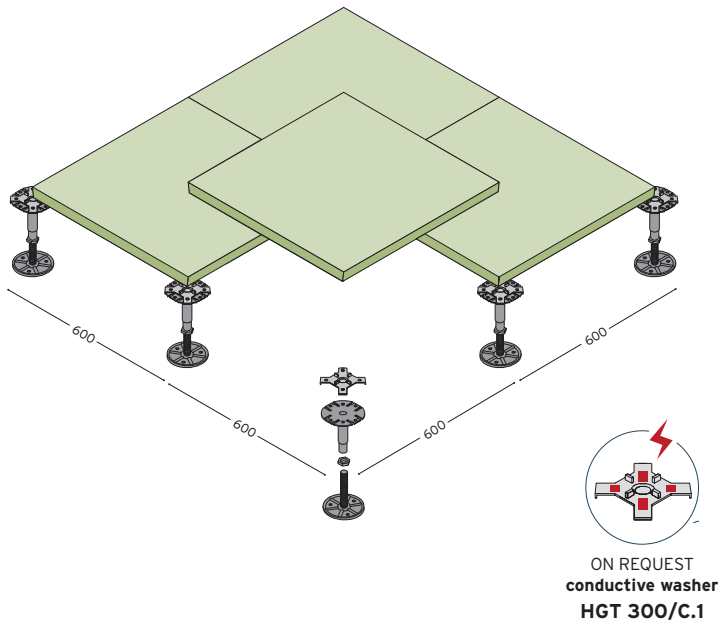
TECHNICAL SPECIFICATIONS	STANDARD DENSITY PANELS			HIGH DENSITY PANELS		
	SC30V h 30,5 mm kg 14,50	SC33V h 33,5 mm kg 16,00	SC36V h 36,5 mm kg 17,00	SC30VHD h 30,5 mm kg 17,60	SC33VHD h 33,5 mm kg 18,80	SC36VHD h 36,5 mm kg 21,10
fire reaction UNI EN 13501-1	A1					
fire resistance UNI EN 13501-2	REI 30			REI 30		> REI 60 <
TECHNICAL FEATURES UNI EN 12825						
CBI/ST 	center of panel - deflection 2,5 mm	4,7 > 5,6 KN			5,1 > 5,9 KN	
	center of panel - ultimate load	9,7 > 11,2 KN			15,3 > 17,5 KN	
	loading class	4 > 5			6	
CBI/CR 	center of panel - deflection 2,5 mm	4,9 > 5,9 KN			5,3 > 6,1 KN	
	center of panel - ultimate load	10,2 > 11,8 KN			16,1 > 19,3 KN	
	loading class	5			6	
IF tubolar 	center of panel - deflection 2,5 mm	5,2 > 6,2 KN			5,6 > 6,4 KN	
	center of panel - ultimate load	10,7 > 12,3 KN			16,9 > 20,2 KN	
	loading class	5 > 6			6	

The load resistance tests have been performed in CBI Europe's internal laboratory and simulate the test method indicated by UNI EN 12825: 2001.

The results obtained at a height of 20 cm may vary depending on the installation and the general conditions of the site. If the project requires a certification from a third party this must be explicitly requested.

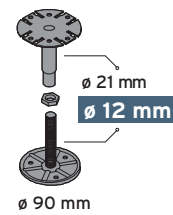
STRUCTURES

FLOOR SYSTEM **CBI/ST** without stringers



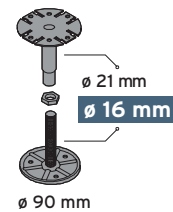
adjustable pedestal

CBI F12



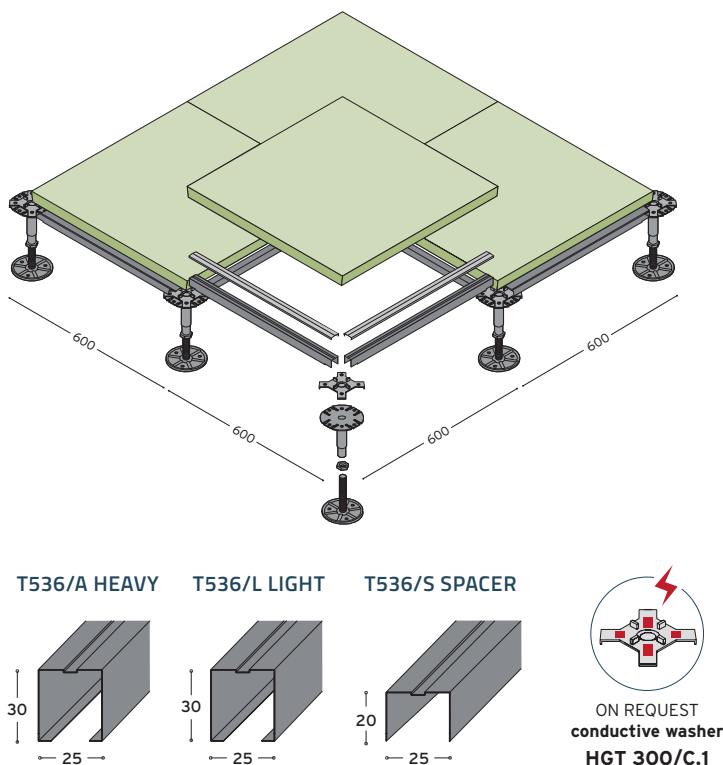
code	height/mm	weight/pcs
CBI03F12	45/65	0,23 Kg
CBI04F12	61/90	0,24 Kg
CBI05F12	83/130	0,27 Kg
CBI06F12	120/200	0,30 Kg

CBI F16

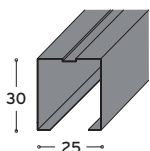


code	height/mm	weight/pcs
CBI03F16	45/65	0,30 Kg
CBI04F16	61/90	0,34 Kg
CBI05F16	83/130	0,39 Kg
CBI06F16	120/200	0,45 Kg
CBI07F16	170/290	0,55 Kg

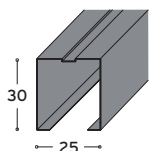
FLOOR SYSTEM **CBI/ST** with stringers



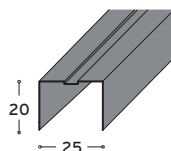
T536/A HEAVY



T536/L LIGHT



T536/S SPACER



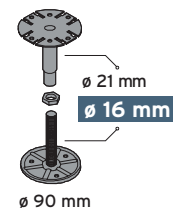
adjustable pedestal

CBI F12



code	height/mm	weight/pcs
CBI03F12	45/65	0,23 Kg
CBI04F12	61/90	0,24 Kg
CBI05F12	83/130	0,27 Kg
CBI06F12	120/200	0,30 Kg

CBI F16



CBI03F16	45/65	0,30 Kg
CBI04F16	61/90	0,34 Kg
CBI05F16	83/130	0,39 Kg
CBI06F16	120/200	0,45 Kg
CBI07F16	170/290	0,55 Kg
CBI08F16	250/390	0,70 Kg
CBI09F16	350/490	0,83 Kg
CBI10F16	450/650	1,00 Kg

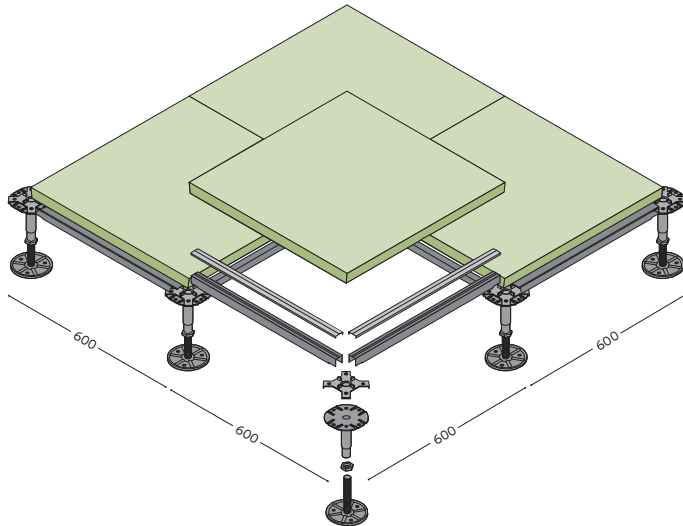
stringers

open section stringer made with galvanised steel, Clip-On System with PVC washer.

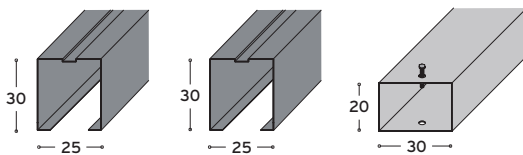
T536/A 30 x 25 x 1 mm
T536/L 30 x 25 x 0,7 mm
T536/S 20 x 25 x 0,7 mm

STRUCTURES

FLOOR SYSTEM CR



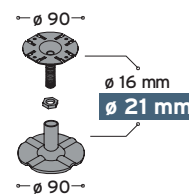
T536/A HEAVY T536/L LIGHT TT535



ON REQUEST
conductive washer
HGT 300/C.1

adjustable pedestal

CR



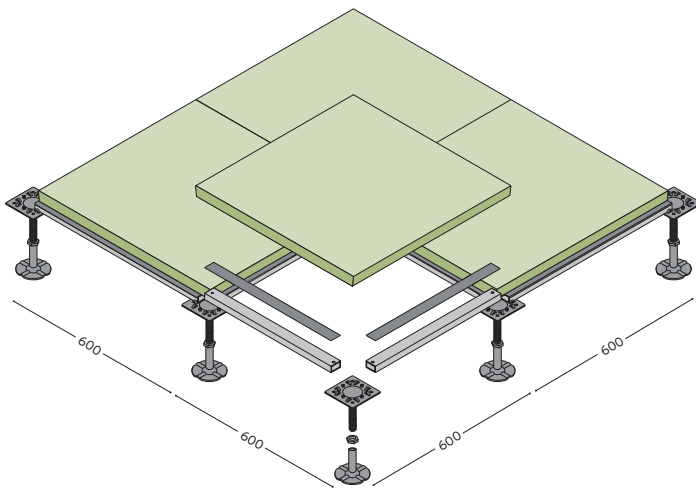
code	height/mm	weight/pcs
CR00F16	120/200	0,55 Kg
CR01F16	200/350	0,68 Kg
CR02F16	350/550	0,94 Kg
CR03F18	550/800	1,34 Kg
CR04F20	800/1050	1,85 Kg
CR05F20	1050/1300	2,14 Kg

stringers

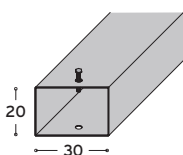
open section stringer made with galvanised steel,
Clip-On / Screw Down System with PVC washer.

T536/A 30 x 25 x thk sp. 1 mm
T536/L 30 x 25 x thk sp. 0,7 mm
TT535 20 x 30 x thk sp. 0,8 mm

FLOOR SYSTEM IF

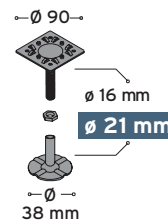


TT535



adjustable pedestal

IF



code	height/mm	weight/pcs
IF1622	160/220	0,70 Kg
IF2128	210/280	0,75 Kg
IF2734	270/340	0,80 Kg
IF3339	330/390	0,85 Kg
IF3844	380/440	0,90 Kg
IF4349	430/490	0,95 Kg
IF4854	480/540	1,00 Kg
IF5359	530/590	1,05 Kg
IF5873	580/730	1,25 Kg
IF7287	720/870	1,40 Kg
IF8699	860/990	1,70 Kg

stringers

open section stringer made with galvanised steel,
Screw Down System with PVC washer.

TT536 20 x 30 x thk sp. 1 mm

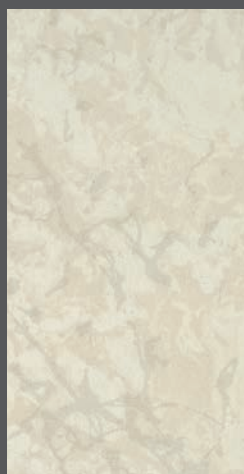
FINISHES

ANTISTATIC HPL _ STANDARD

available sizes: 600 x 600 mm



577 grey



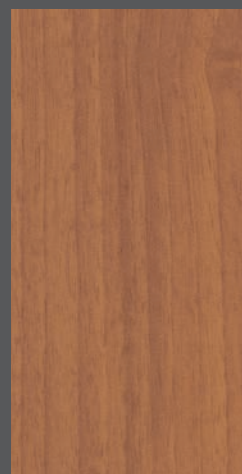
576 ivory



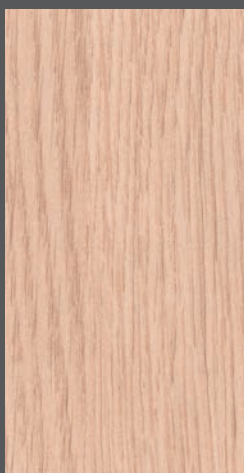
1666 beech



1611 maple



1329 doussié



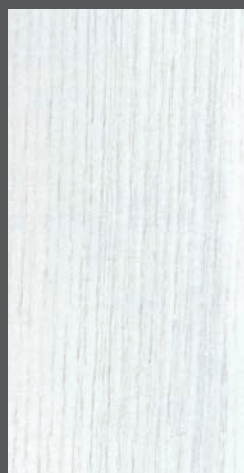
650 oak texas



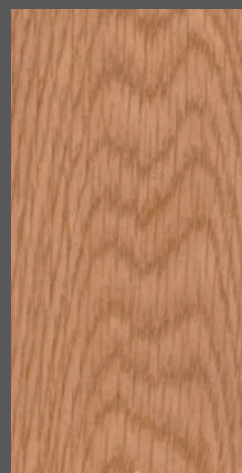
2810 cement



616 walnut sabec



1385 ash white



1661 oak



671 rustic beech



548 rocks piacentina



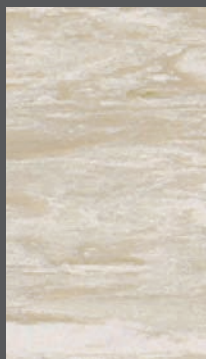
546 rocks tivoli

Other types of antistatic HPL available on request. The standard coverings used are all original Abet Walkprint finishing type SEI.

FINISHES

ANTISTATIC PVC - MIPOLAM CLASSIC

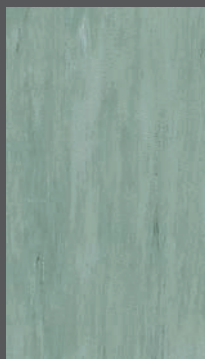
available sizes: 600 x 600 mm thickness: 2,0 mm



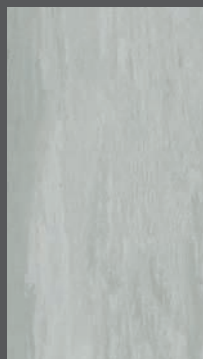
0003 ivory



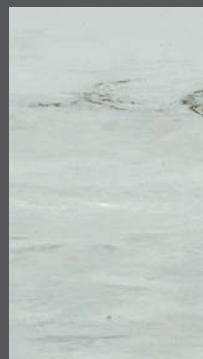
0010 azure



0120 borneo



0108 pepper



0002 platinum

DISSIPATIVE FLOORING - MIPOLAM ROBUST EL7 STATIC

available sizes: 600 x 600 mm thickness: 2 mm



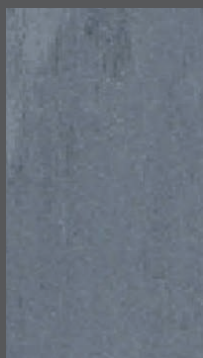
0002 platinum



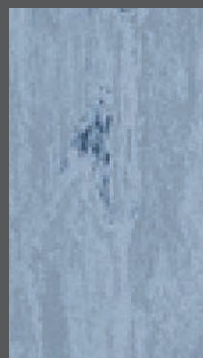
0003 ivory



0005 steel



0013 pewter



0112 storm



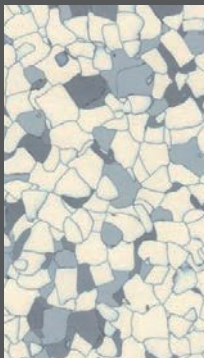
0306 green

CONDUCTIVE PVC - MIPOLAM TECHNIC EL5

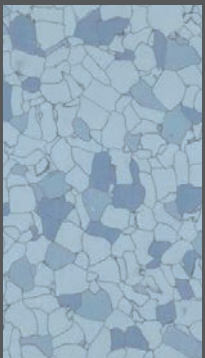
available sizes: 600 x 600 mm thickness: 0,9 mm



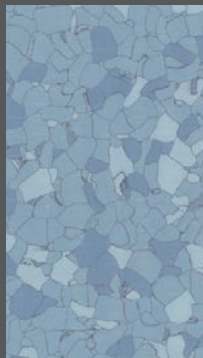
0635 white



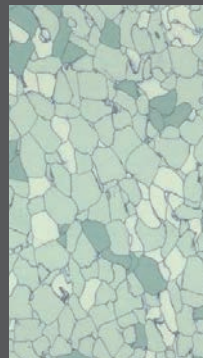
0636 grey



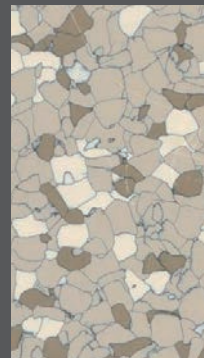
0637 light blue



0638 blue



0639 green



0640 beige

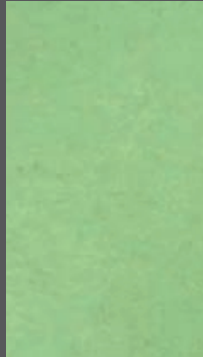
FINISHES

LINOLEUM

available sizes: 600 x 600 x 2,0 / 2,5 / 3,2 mm



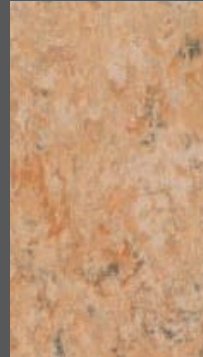
amber



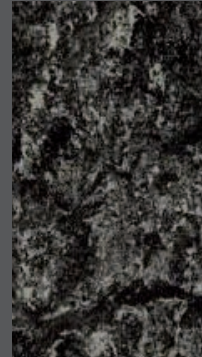
applegreen



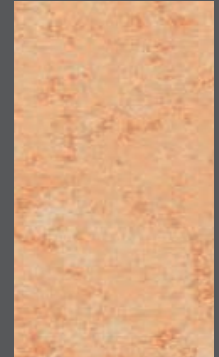
begonia



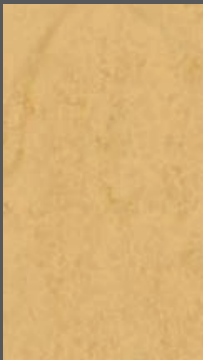
camel



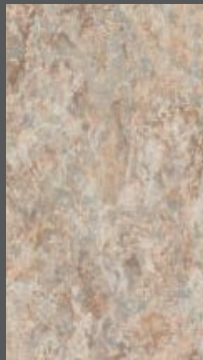
charcoal



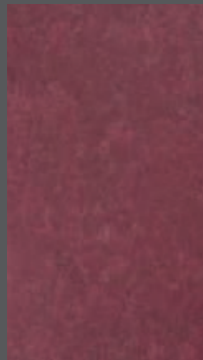
coral



corn



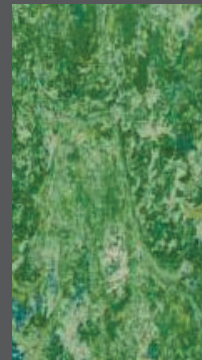
durango



granata



graphite



grass



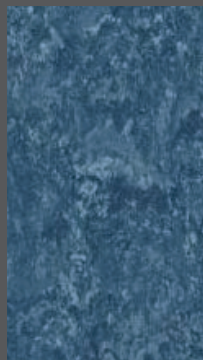
hyacinth



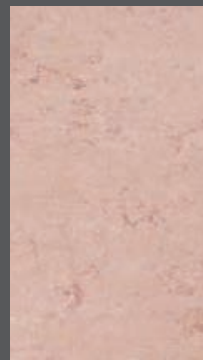
mint



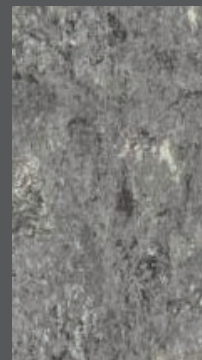
navy



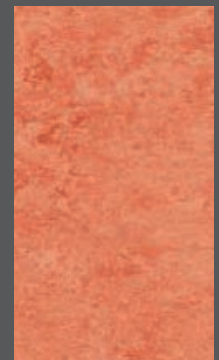
ocean



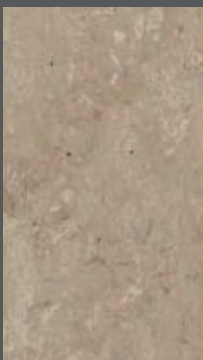
pale pink



pebble



salmon



silk



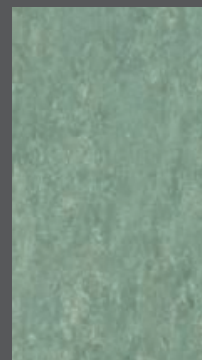
storm



terracotta



tiger eye



willow green



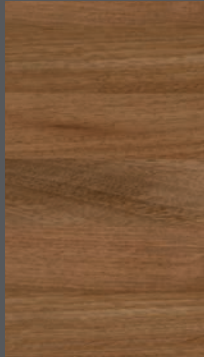
white

The linoleum tiles used from CBI Europe are all original Tarkett. Other types of linoleum, available on request

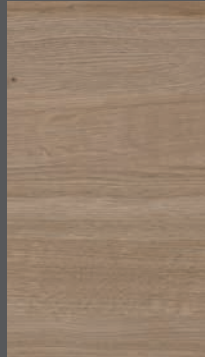
FINISHES

SOLID WOOD PARQUET _ ESSENCES

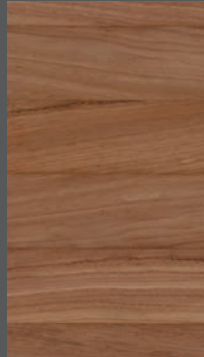
available sizes: 600 x 600 mm standard thickness: 4 mm · other thickness on request



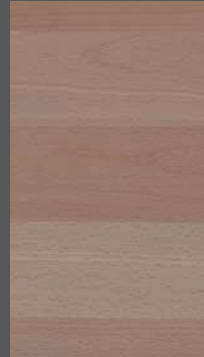
iroko



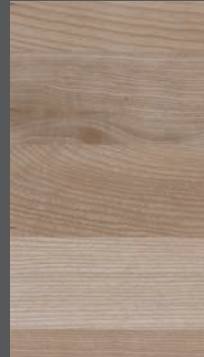
oak



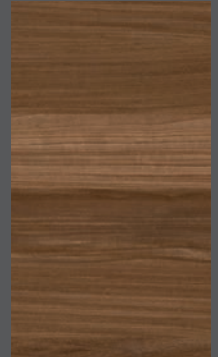
doussié africa



beech



ash



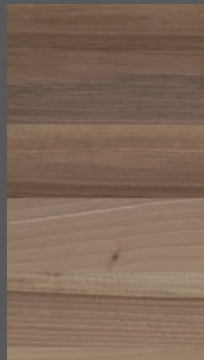
afromosia



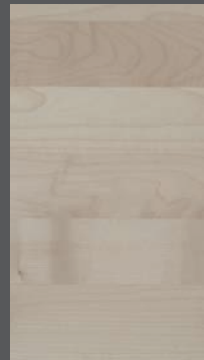
teak



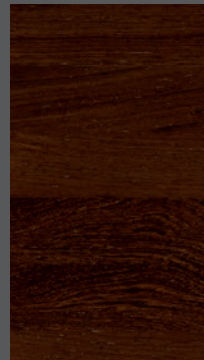
europe cherry



europe walnut



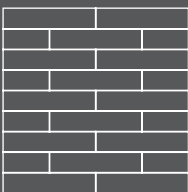
europe maple



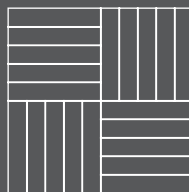
wengé

PARQUET DESIGN

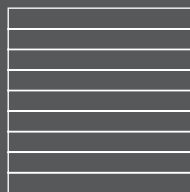
available sizes: 600 x 600 mm standard thickness: 4 mm · other thickness on request · other types of solid wood parquet available on request



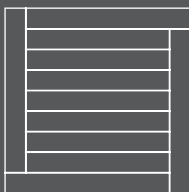
quarterdeck



mosaic



main deck



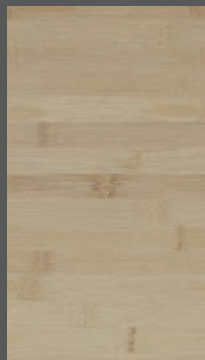
friuli

SOLID WOOD BAMBOO

available sizes: 600 x 600 mm standard thickness: 5 mm



oak bamboo

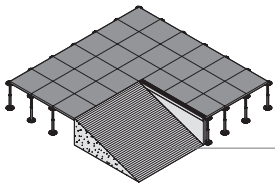


ash bamboo

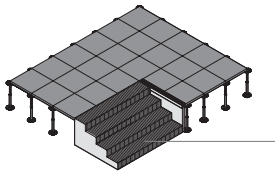
Other types of solid wood parquet available on request

ACCESSORIES

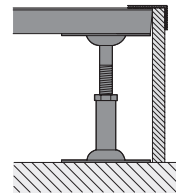
RAMPS AND CONNECTION STEPS



R/RAC
*mdf, connection step with anti-slip black rubber



G/Gan
*mdf, connection step with anti-slip black rubber



extruded aluminium molding

A/ALL

● 436 grey

vertical upstand

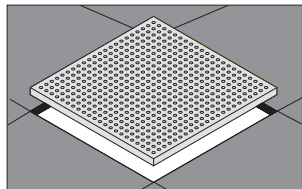
FTN/12

○ 422 white ● 436 grey

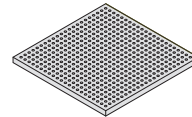
● 421 black

*other ramp finishes available on request: HPL, PVC, linoleum

PERFORATED PANEL



AF1
AF2
perforated panel for ventilation



600 x 600 mm

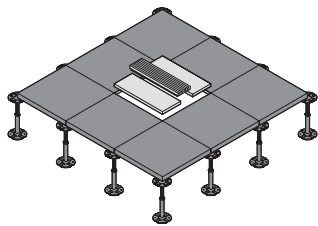
AF1

holes \varnothing 8 mm $S=1.45$ dm² -20%
holes \varnothing 10 mm $S=2.26$ dm² -15%

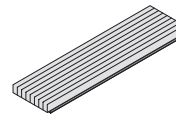
AF2

holes \varnothing 8 mm $S=2.72$ dm² -20%
holes \varnothing 10 mm $S=4.27$ dm² -15%

ALUMINIUM VENTILATION GRID



GRS/150
GRS/300
GRS/600
aluminium ventilation grid with dumper for air regulation

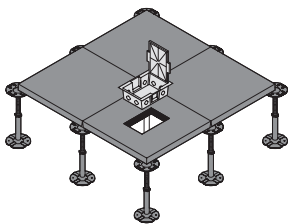


GRS/150 600 x 150 mm

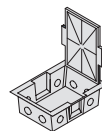
GRS/300 600 x 300 mm

GRS/600 600 x 600 mm

ELECTRICAL OUTLET BOX



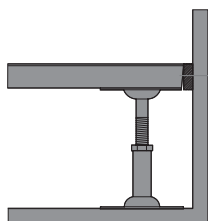
TS/8
electrical outlet box



TS/8

electrical outlet box, 8 partitions
> available on request 16 modules version

PERIMETRAL GASKET FOR FIXING



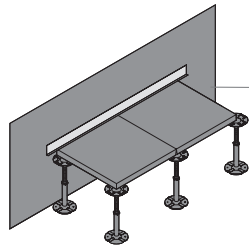
X105
*perimetral gasket for fixing



X105/30 5x30 mm lenght 28 ml/rool
X105/40 5x40 mm lenght 28 ml/rool

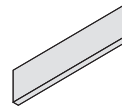
*one-component polyuretane based foam available on request instead of the perimetral seal

SKIRTING



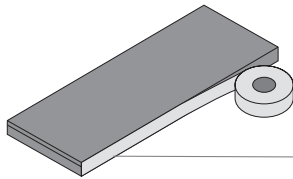
BT/PVC
perimeter skirting

○ 422 white ● 436 grey
● 421 black

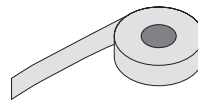


BT/PVC 60/80 x 5 x 3000 mm

SELF-ADHESIVE ALUMINIUM



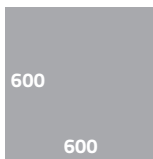
SA/ALL
SA/ALL.1
self-adhesive aluminium tape
euro class A1 incombustible



SA/ALL/30 30 x length 50 ml/roll
SA/ALL/40 40 x length 50 ml/roll

MODULARITY

panel



The standard
600 x 600 mm
format effectively
optimises usage.

incidence

surface	panel	pedestal	stringer
25 mq	3,3	4,0 pz/mq	7,2 pz/mq
50 mq	3,3	3,5 pz/mq	6,4 pz/mq
100 mq	3,3	3,3 pz/mq	6,2 pz/mq
200 mq	3,3	3,2 pz/mq	6,1 pz/mq
400 mq	3,3	3,2 pz/mq	5,9 pz/mq
1000 mq	3,3	2,8 pz/mq	5,6 pz/mq

The average incidence is theoretic. It changes according to the dimension and shape of the space.

PACKAGING

pedestal

CBIF12	height		CBIF16	height		CR	height	
			CBIO1F16	26/35 mm	80	CR00F16	120/200 mm	50
			CBIO2F16	32/48 mm	80	CR01F16	200/350 mm	30
CBIO3F12	45/65 mm	75	CBIO3F16	45/65 mm	75	CR02F16	350/550 mm	30
CBIO4F12	61/90 mm	60	CBIO4F16	61/90 mm	60	CR03F18	550/800 mm	15
CBIO5F12	83/130 mm	55	CBIO5F16	83/130 mm	55	CR04F20	800/1050 mm	15
CBIO6F12	120/200 mm	50	CBIO6F16	120/200 mm	50	CR05F20	1050/1300 mm	10
CBIO7F12	170/290 mm	40	CBIO7F16	170/290 mm	40			
			CBIO8F16	250/390 mm	30			
			CBIO9F16	350/490 mm	20			
			CBIO10F16	450/650 mm	20			

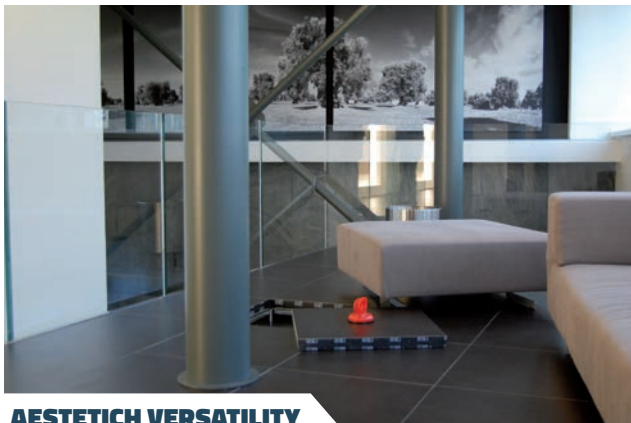
Pedestal for the IF / IF Plus system are sold individually.

RAISED ACCESS FLOORS: versatile, functional, 100% made in Italy.

CBI Europe is a leading manufacturer of raised access floors, with an output of over a 5 million square metres a year. Thirty years of development and the experience gained from installations in 70 different countries around the world ensure that CBI Europe's raised floor systems solve all the

problems normally caused by incompatibility between architectural restrictions and the perpetual changes demanded by evolving technology.

CBI Europe's floors also create environments with a high level of sustainability and livability.



AESTETICH VERSATILITY



LIMITLESS CONFIGURATION



HI-TECH PERFORMANCES

Why

**VERSATILE, HIGH-TECH, SUSTAINABLE,
EASY TO INSTALL AND INSPECT:
THE PERFECT SOLUTION FOR ALL
TYPES OF STRUCTURAL AND DESIGN
REQUIREMENTS.**

Where

**NEW-BUILD AND REFURBISHED OFFICES,
BANKS, OPERATIONS CENTRES,
CONTROL ROOMS, HOSPITALS,
HOMES AND PUBLIC BUILDINGS.**

Benefit

- **ACHIEVING FLEXIBLE, COMFORTABLE, CONTEMPORARY AND RESPONSIBLE INTERIORS.**
- **OBTAINING POINTS FOR LEED CERTIFICATION.**
- **SOUNDPROOFED ENVIRONMENTS.**
- **SPEEDING UP CONSTRUCTION.**
- **CONTAINING COSTS OF LABOUR AND MAINTENANCE.**
- **STRUCTURES 100% INSPECTABLE.**
- **INTEGRATION WITH ADVANCED CLIMATE CONTROL, DOMOTICS AND LIGHTING.**
- **PRECISE BUDGETING.**



FIRE REACTION

All products are continually subjected to laboratory tests during the design and testing of certified institutes before sale. The Calcium Sulphate Fully Steel Encapsulated System CBI Europe is the first and only one to have obtained the highest certification of fire resistance: REI 60.



EXTENDED WORKING LIFE & DIMENSIONAL STABILITY

The excellence of the materials used and the production technologies make panels and structures resistant and lasting over time.



ACOUSTIC ABSORPTION

The high density of the materials used contributes to the absorption of sounds, increasing the comfort of the working environments. Upon request they can be supplied with certifications.



WALKING COMFORT

The flexural strength ensures an optimal response to the stresses of foot traffic. Upon request they can be supplied with certifications.



HUMIDITY RESISTANCE

Maintain their dimensional stability even under extreme ambient conditions, and can therefore be installed in environments characterised by high levels of relative humidity and large variations in temperature.



LEED CERTIFICATION

Wood agglomerate or calcium sulphate panels obtained from recyclable raw materials and manufactured in certified and constantly monitored processes to guarantee the highest standards of quality and safety. Each system contributes to obtaining points for LEED certification.



FASTNESS

Light, modular and easy to handle, the systems are designed to guarantee rapid installation, respecting all the requirements of planarity and orthogonality. The inspection of the individual panels allows a significant reduction in time and maintenance costs.



INSPECTABILITY

100% inspectable, giving easy access to water pipes and electrical cables and permitting easy reconfiguration of rooms.



CBI EUROPE Via Mons. A.O. Romero, 14 · 60027 Osimo (AN) Italy
T +39 071 71 08 688 · fax +39 071 71 08 63 · info@cbi-europe.com · www.cbi-europe.com

